

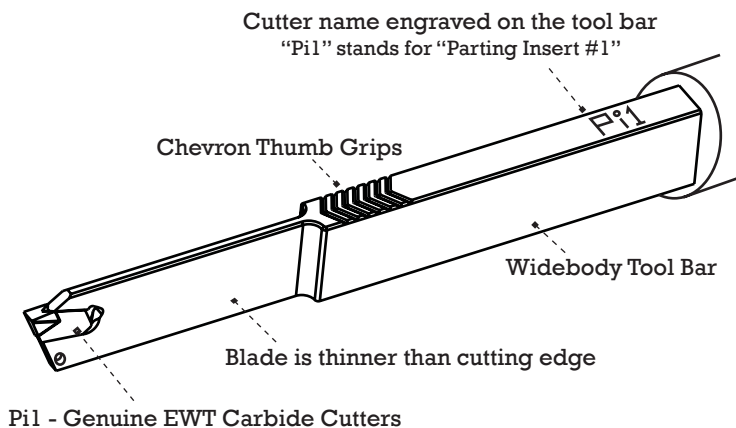


Customer Support 1-866-963-0294  
customerservice@easywoodtools.com

## Product Information Easy Parting Tool

### THE EASY PARTING TOOL

The Easy Parting Tool is great for making that last part-off cut on projects up to 4" diameter and establishing diameters on your spindle turning projects. Also, use your imagination to add tiny details, deep grooves to your project and many other unique cuts that were not so easy with your old parting tool.



This is the easiest and best performing parting tool ever! And with perfect geometries built right into the replaceable cutters, you never need to fuss with sharpening.

#### REGISTER YOUR TOOL

Be sure to register your new tool to receive advance notice of:

- Product updates
- Demonstration events and classes
- New tool models and products

Look for this button

**REGISTER**  
your tool purchase  
Click here

Register at [www.easywoodtools.com](http://www.easywoodtools.com)



And don't forget to check us out on Facebook!

#### WARRANTY INFO

*Easy Wood Tools products are legendary in their ability to withstand an incredible amount of abuse in the hands of most any turner. The Easy Parting Tool underwent countless hours of real world testing for strength and durability both in-house and in the hands of pro turners all over the country. This does not mean the product is indestructible, but if used within reason, it will last you a lifetime.*

*Failure to follow the product use guidelines set forth in this information sheet will void your warranty. Easy Wood Tools will not issue a refund or replacement if you damage your tool through improper use.*

*We want you to be happy with your investment in our products. If you have any issue at all with any Easy Wood Tools product, we want to hear from you. Thank you for purchasing this Easy Parting Tool!*

**The Easy Wood Tools Team**



#### FOR YOUR SAFETY

- Read this product information and watch our online videos carefully until you fully understand the concepts involved
- Read and understand your lathe's owners manual
- Wear safe clothing and proper eye protection
- Secure your workpiece properly
- Use the right tool for the job
- Set the tool rest height to align the top of the cutter to spindle center
- Always maintain your tool flat on the tool rest and level to the floor
- Never use the tool with the handle below level
- Maintain a sharp cutter so that you get a clean cut without forcing the tool into the wood
- Never cut deeper than the "Max Overhang" label on the toolbar or else the tool may become unstable

#### TOOL TIPS

- Maintain the tool dead vertical on the tool rest for the duration of the cut. If you tilt it any, the tool may bind in the groove and cause tool damage or injury!
- Do not make cuts on the face of your project more than 1/8" deep without widening the groove with a separate plunge cut
- Never cut side-to-side with this tool. You will damage the cutter pocket
- Never wiggle the tool side to side to widen the cut
- Don't force the tool into the cut but rather use slow, even cutting pressure
- Never part your project completely in two when working between centers. This would cause the two halves of the wood to pinch and pull out the cutter. (Cut down to about a 1/4" diameter and then handsaw the remainder)



### **WARNING!** California Proposition 65 Warning

**Proposition 65 is a California law that applies to any product(s) sold in California.**

Some products sold by Easy Wood Tools contain chemicals known to the state of California to cause cancer and birth defects or other reproductive harm.

A Proposition 65 warning means one of two things: (1) the business has evaluated the exposure and has concluded that it exceeds the "no significant risk level"; or (2) the business has chosen to provide a warning simply based on its knowledge about the presence of a listed chemical without attempting to evaluate the exposure. Easy Wood Tools has chosen to provide a warning based on its knowledge about the presence of one or more listed chemicals without attempting to evaluate the level of exposure. With products manufactured by Easy Wood Tools, the exposure may be below the Proposition 65 level of concern, or could even be zero. However, out of an abundance of caution, Easy Wood Tools, has elected to place a Proposition 65 warning notification on its products.

This product may contain chemicals known to the State of California to cause cancer and birth defects or other reproductive harm. Some dust created by power sanding, sawing, grinding, drilling, and other construction activities contain chemicals known to the State of California to cause cancer and birth defects or other reproductive harm. Some examples of these chemicals are:

- lead from lead-based paints
- nickel
- arsenic and chromium from chemically treated lumber

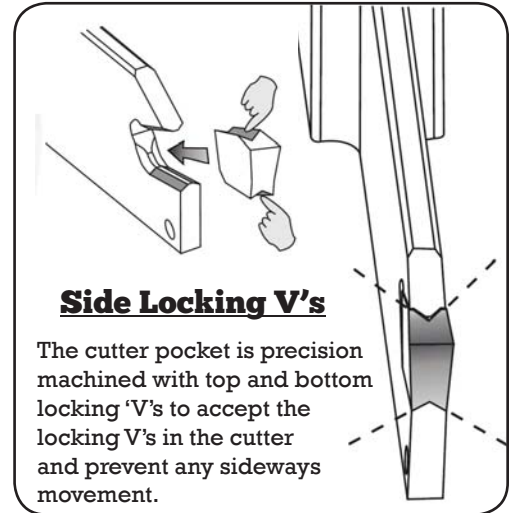
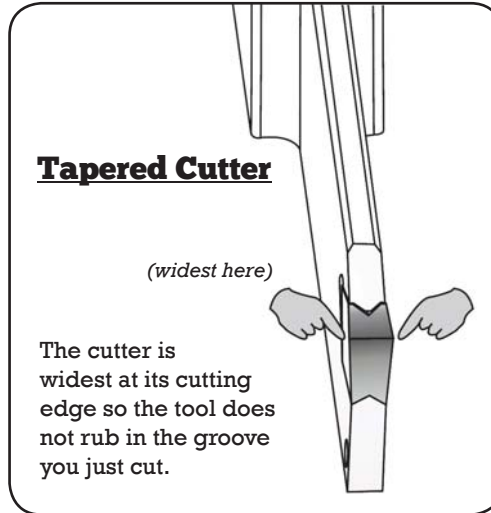
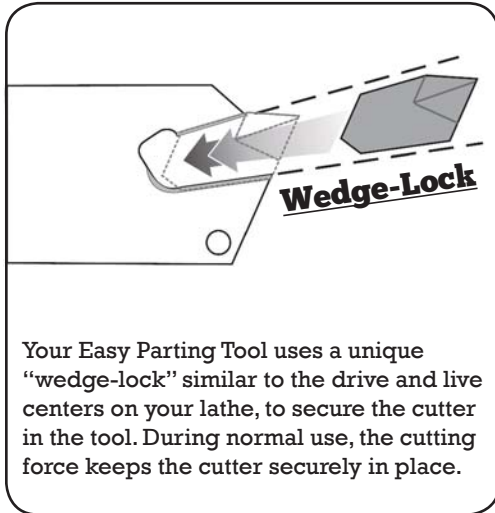
Your risk from exposure to these chemicals varies, depending on how often you do this type of work. To reduce your exposure, work in a well ventilated area and with approved safety equipment, such as dust masks that are specifically designed to filter out microscopic particles.\*WARNING: This product can expose you to chemicals including nickel and lead-based paints, which is (are) known to the State of California to cause cancer and birth defects or other reproductive harm.

For more information go to: [www.P65Warnings.ca.gov](http://www.P65Warnings.ca.gov)

# THE EASY PARTING TOOL

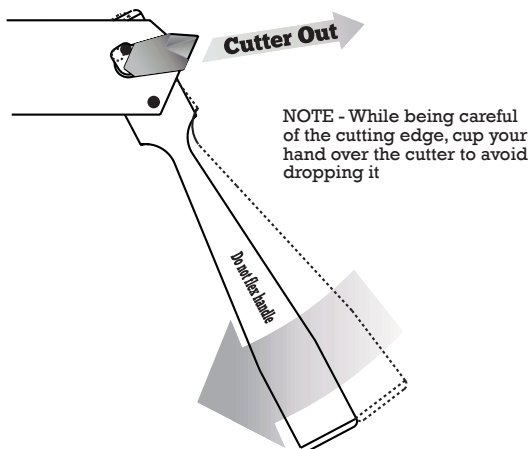


## The technology



## Cutter Removal

A very slight rotation of the provided Flex Key moves the cutter forward unlocking it for removal.

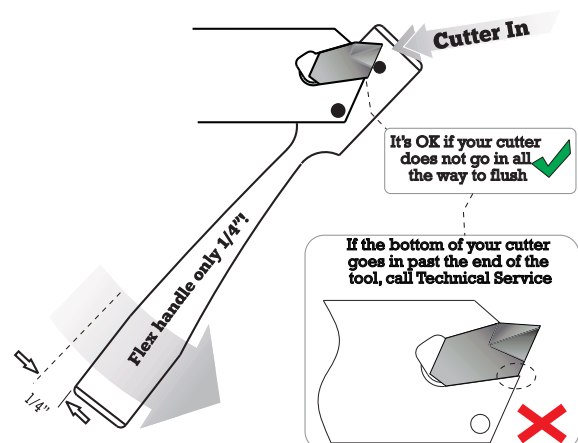


! Over rotating your Key will damage your tool !

- Insert the long pin of the Flex Key into the pivot hole below the cutter and the short pin behind the cutter - so you see the same perspective as shown above.
- A very slight rotation of the Flex Key will cause the short pin to move the cutter forward unlocking it for removal.
- **WARNING** - Upon releasing the cutter, the short pin will immediately hit its stop point and if you continue to apply force, you will deform the cutter pocket.

## Cutter Installation

Insert your new cutter by hand into a cleaned cutter pocket and flex the Key only 1/4" to seat the cutter.



! Over flexing the Key will spring the cutter pocket !

- Clean the cutter pocket to remove sap and dust.
- Insert the cutter into the pocket by hand with the cutting edge up as shown) and apply light pressure so it will stay in place.
- Insert the long pin of the Flex Key into the pivot hole below the cutter and the short pin in front of the cutter.
- Rotate the Flex Key until the end of its handle flexes about 1/4" and the cutter will be correctly seated in the pocket.
- The bottom edge of the cutter will be between 1/64" proud and flush.
- If cutter goes in past flush, please call Technical Service

It's a good idea to check your cutter with the Flex Key before each turning session.